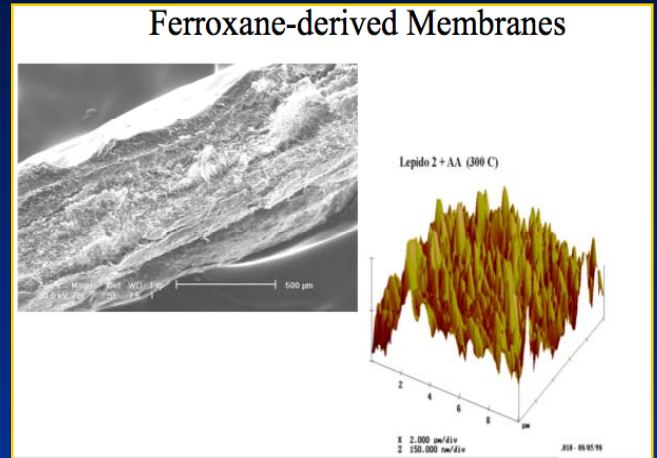


ENVIRONMENTAL NANOTECHNOLOGY

This is an interdisciplinary interest area with a special focus on the following topical areas. Explore faculty research options through the URLs provided.



- Ecological Impacts
 - Gunsch <http://gunsch.pratt.duke.edu>
- Environmental implications of metal-sulfide nanoparticles
 - Hsu-Kim <http://hsukim.pratt.duke.edu/research>
- Lab-on-chip sensors
 - Khlystov <http://aerosol.pratt.duke.edu/>
- Environmental Implications of Nanomaterials
 - Wiesner <http://wiesner.cee.duke.edu/?q=node/129>
- Nanomaterial-based environmental technologies
 - Wiesner <http://wiesner.cee.duke.edu/?q=node/130>
- Fluid flow at the small length scales
 - Dolbow http://dcml.pratt.duke.edu/grad_fluid.shtml